

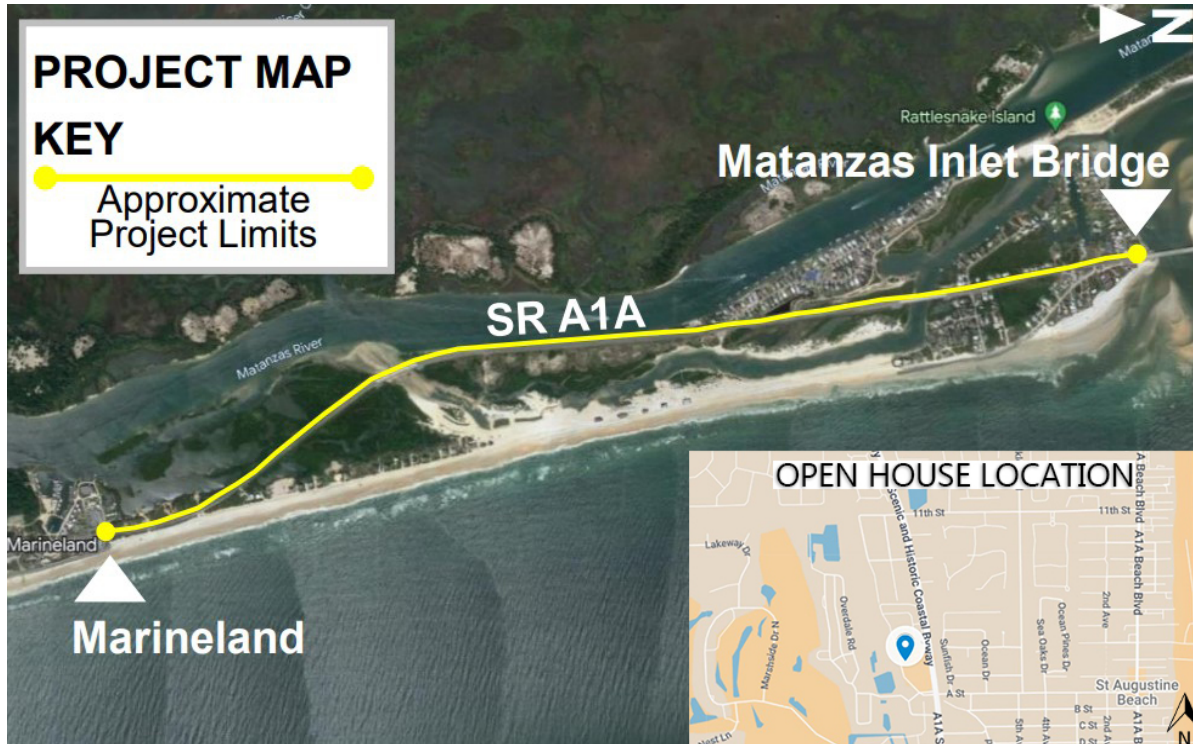


FIN 447064-1

# HYBRID CONSTRUCTION OPEN HOUSE

State Road A1A Trail from Marineland to  
Matanzas Inlet Bridge

St. Johns County, Florida



**Construction starts: Fall 2026**  
**Construction ends: Late 2027**

**Contractor: TBD**  
**Cost: \$9.1 million**

FDOT would like to invite you to a hybrid construction open house for the State Road A1A Trail from Marineland to the Matanzas Inlet Bridge project on Tuesday, Jan. 27 from 4:30 to 6 p.m. You can attend in person at the St. Johns County Public Library, Anastasia Island Branch, 124 Sea Grove Main St, St. Augustine Beach, FL 32080 or virtually at [www.nflroads.com/VPH](http://www.nflroads.com/VPH). You may also dial in by phone +1 (562) 247-8321, access code: 578-975-073.

The State Road A1A Trail project from Marineland to the Matanzas Inlet Bridge is in the final design stage. The trail will be constructed on the west side of State Road A1A. The roadway will be shifted at the revetment along the Intracoastal waterway to allow room for the trail. The construction of the trail will coincide with two resurfacing projects to resurface State Road A1A in St. Johns County from the Flagler County Line to State Road 312. Project team members will be available to answer any questions related to the trail project at this time.

**Questions? Contact Jacob Pickering at (904) 360-5471 or [Jacob.Pickering@dot.state.fl.us](mailto:Jacob.Pickering@dot.state.fl.us).  
For additional project information, visit [www.nflroads.com](http://www.nflroads.com).**